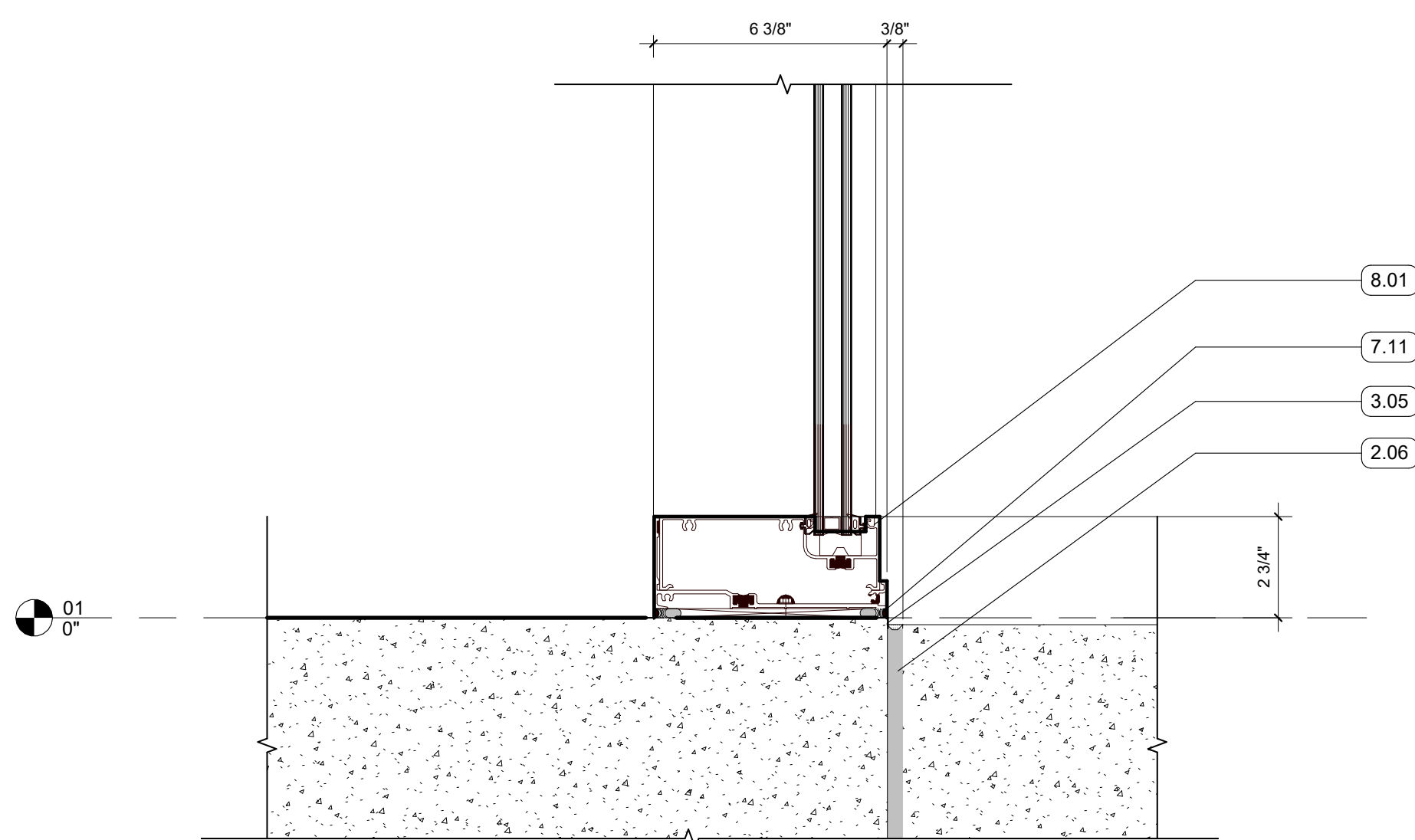
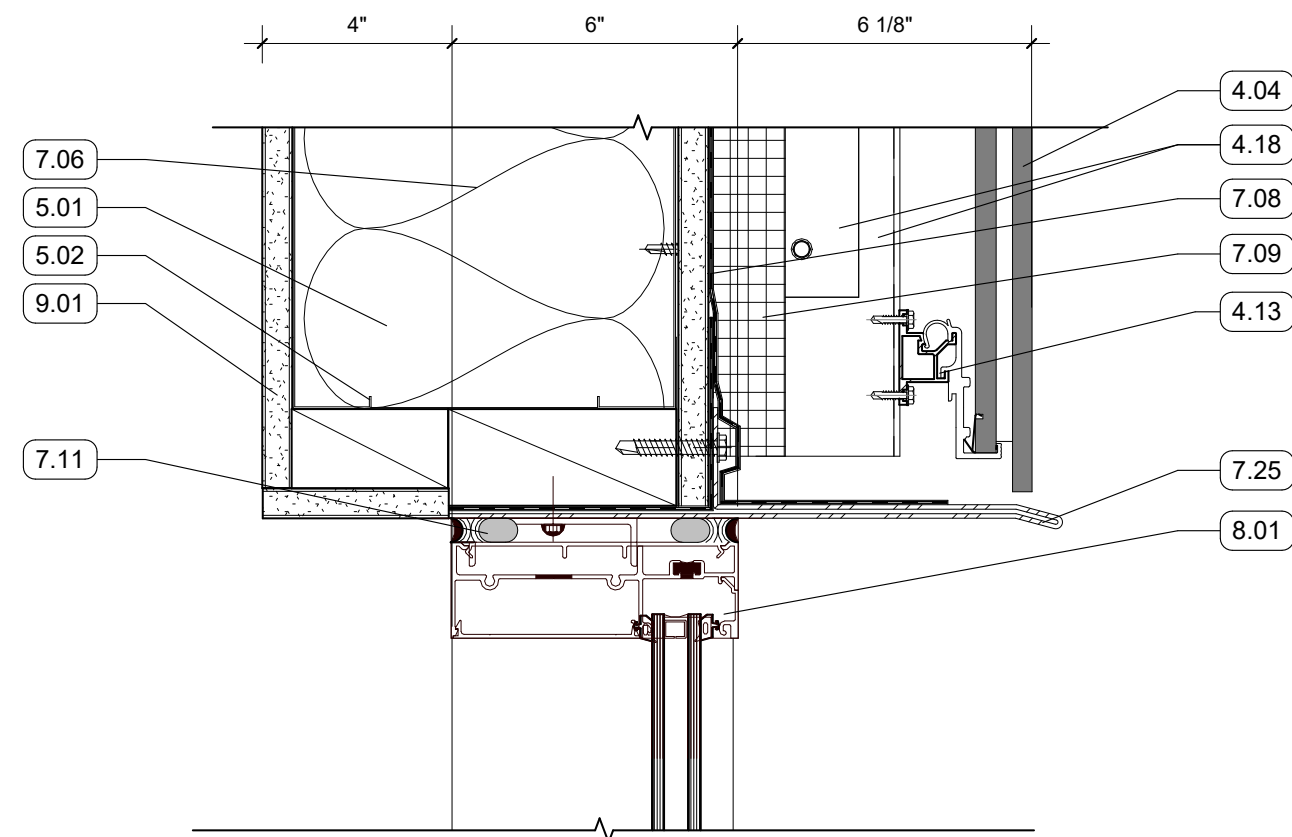


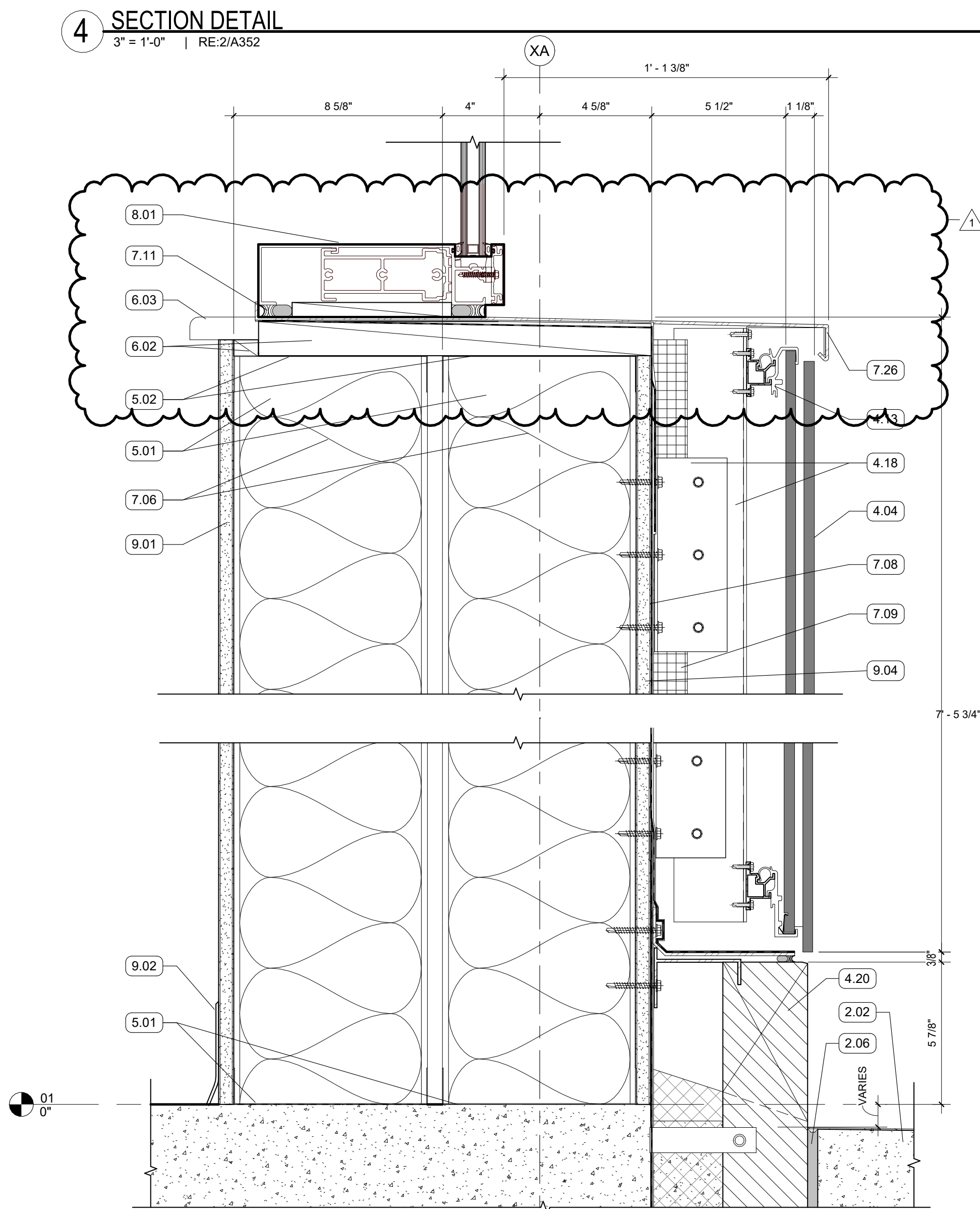
1 SECTION DETAIL - DINING STOREFRONT BASE
3" = 1'-0" | RE:4/A353



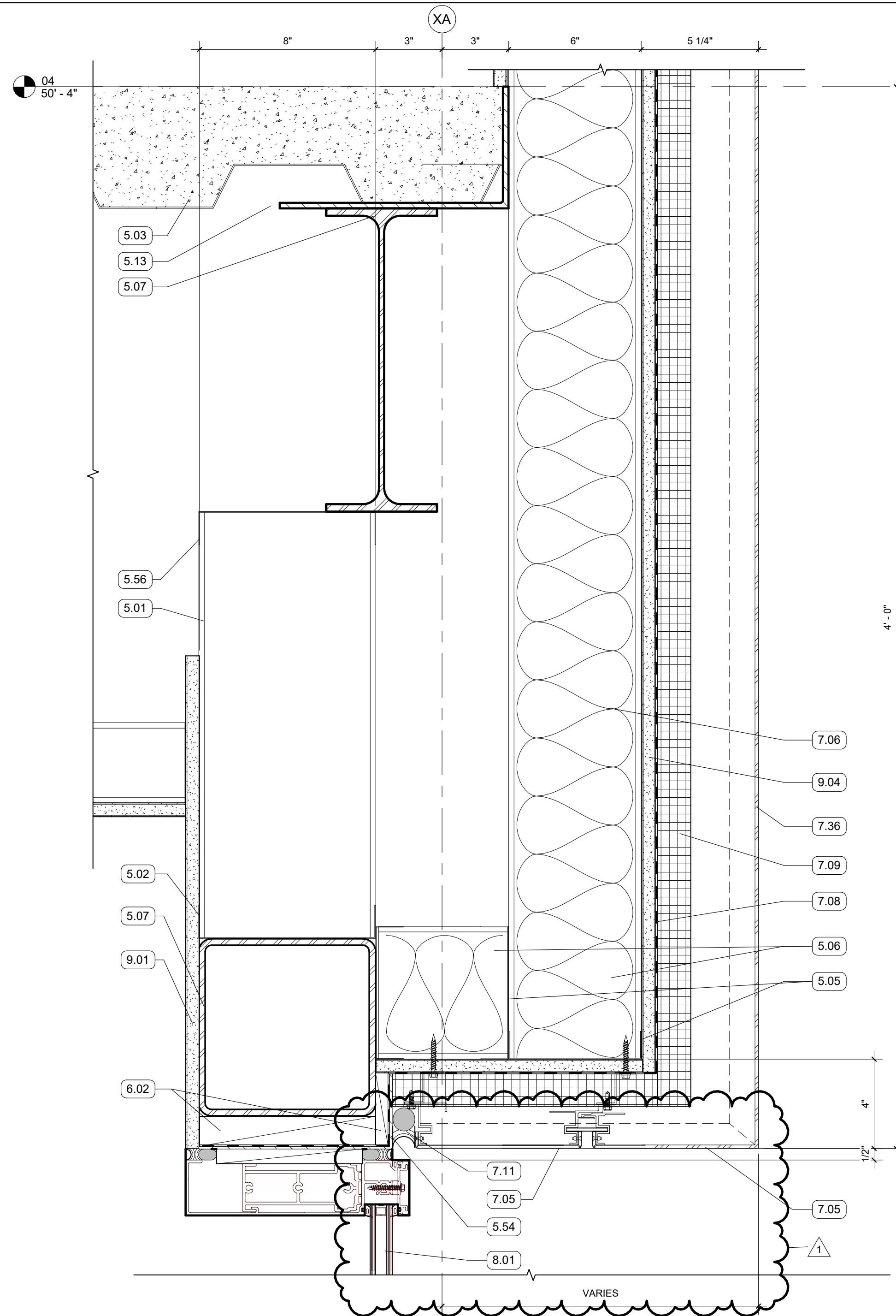
2 SECTION DETAIL - STOREFRONT HEAD CONDITION
3" = 1'-0" | RE:4/A353



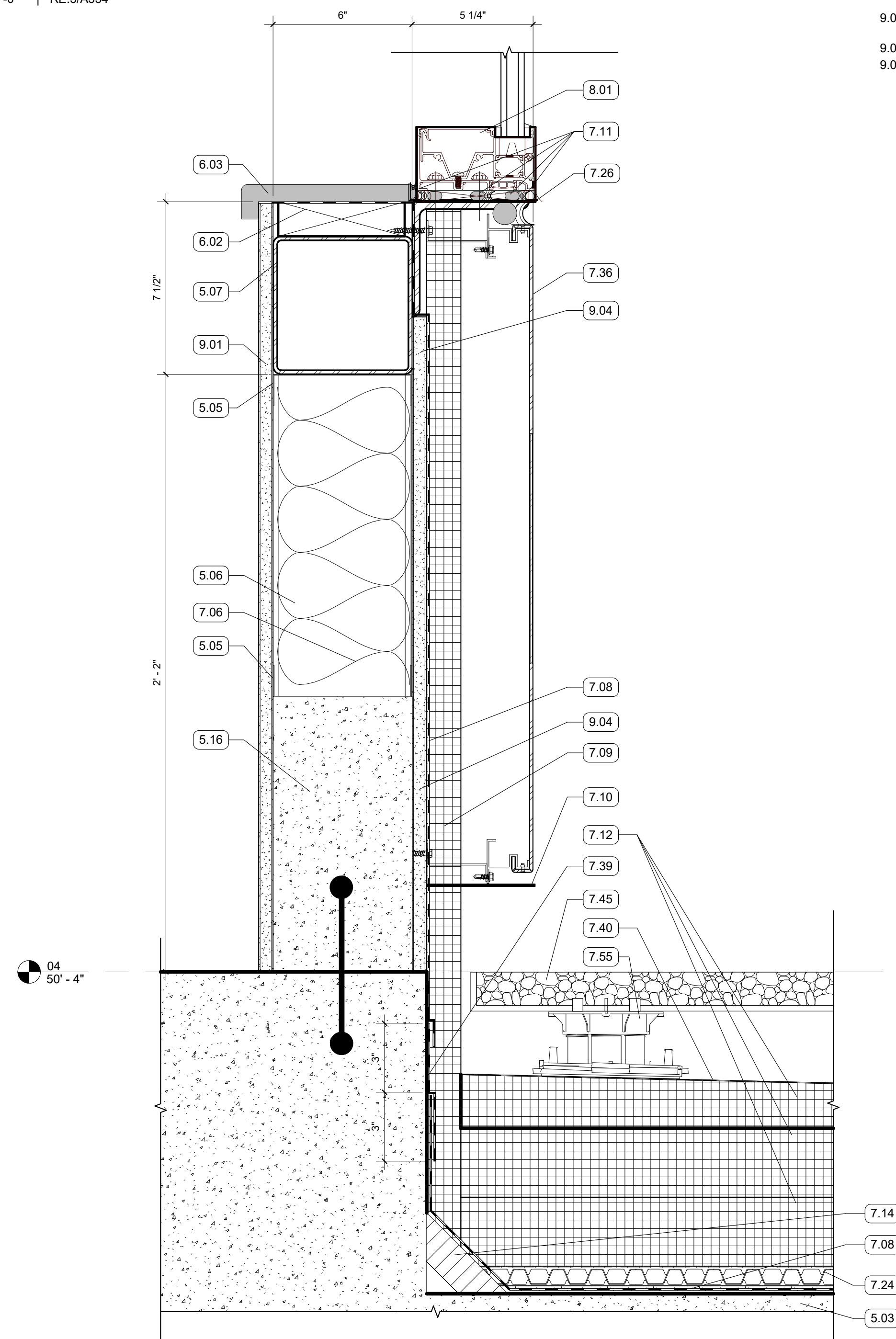
3 SECTION DETAIL - TESTING ROOM // CURTAIN WALL INSET
3" = 1'-0" | RE:2/A352



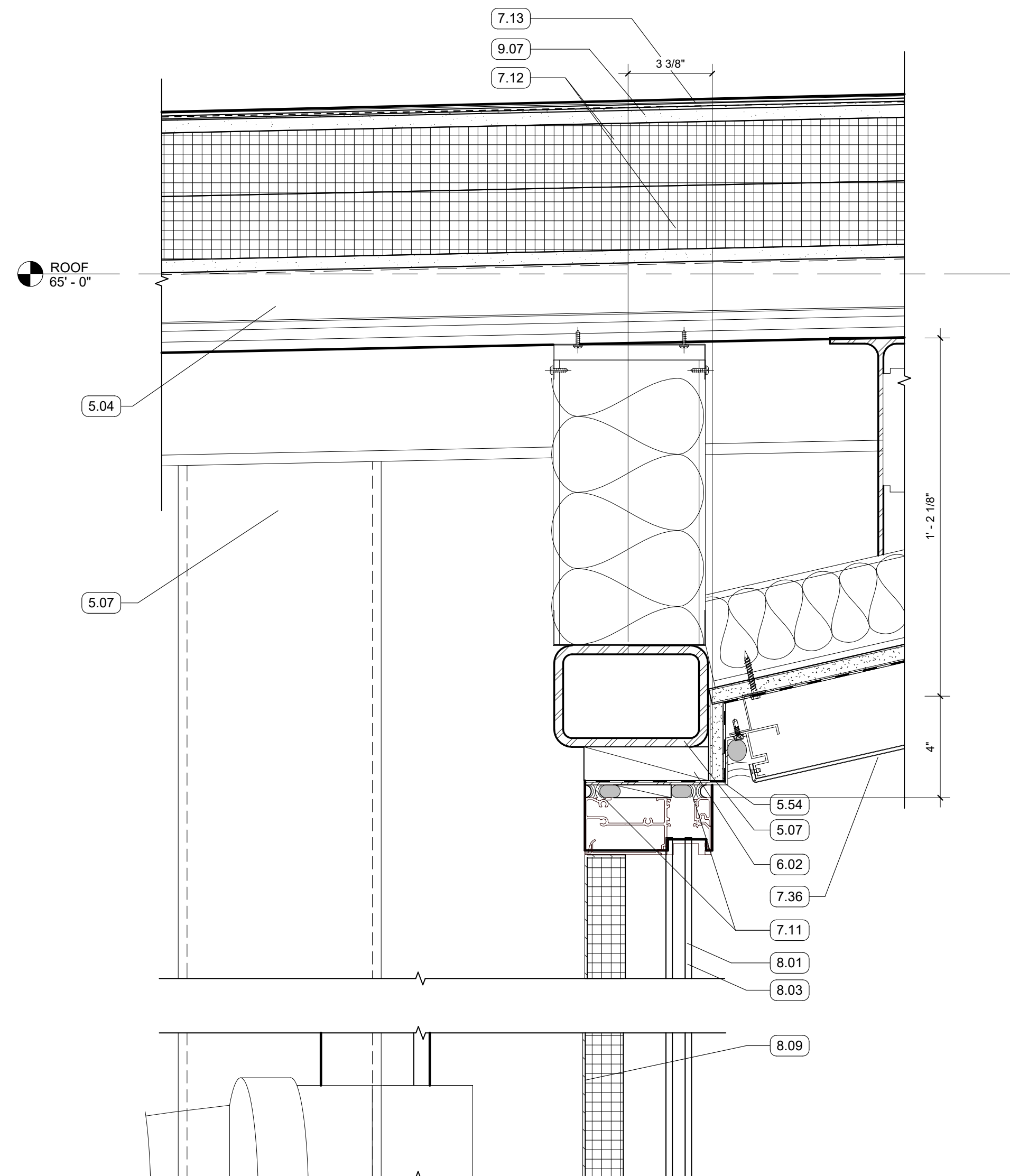
4 SECTION DETAIL
3" = 1'-0" | RE:2/A352



5 SECTION DETAIL
3" = 1'-0" | RE:3/A354



6 SECTION DETAIL - 4TH FLOOR ROOF SOFFIT
3" = 1'-0" | RE:3/A354



GENERAL NOTES

1. ALL EXPOSED STRUCTURAL FRAMING & DECKING TO BE PAINTED

KEYNOTES

- 2.02 CONCRETE SIDEWALK
- 2.06 PREFORMED EXPANSION FILLER & SEALANT
- 3.05 CEMENT PARGE COAT ON EXPOSED SLAB EDGE
- 4.04 TERRA COTTA RAINSCREEN - STACK BOND, UNIT SIZE #1
- 4.13 NON-CONTINUOUS ALUMINUM SUBSTRUCTURE
- 4.18 CONTINUOUS ALUMINUM SUBSTRUCTURE
- 4.20 CAST STONE PANEL
- 5.01 8" METAL STUD FRAMING
- 5.02 8" METAL STUD TRACK
- 5.03 5 1/2" COMPOSITE MTL DECK AND CONCRETE SLAB
- 5.04 2" MTL ROOF DECKING
- 5.05 6" METAL TRACK
- 5.06 6" METAL STUD FRAMING
- 5.07 STRUCTURAL STEEL FRAMING
- 5.13 EDGE ANGLE
- 5.16 CONCRETE CURB
- 5.54 BRAKE METAL TRIM
- 5.56 DEFLECTION TRACK
- 6.02 WOOD BLOCKING
- 6.03 SOLID SURFACE WINDOW STOOL WITH CHAMFERED EDGES
- 7.05 MCM PANEL SOFFIT
- 7.06 BATT INSULATION, SIZED TO MATCH STUD DEPTH
- 7.08 PROTECTION COURSE
- 7.09 MINERAL FIBER BOARD INSULATION
- 7.10 THRU-WALL FLASHING, SLOPED TO DRAIN
- 7.11 BACKER ROD AND SEALANT
- 7.12 2 1/2" POLYISO INSULATION
- 7.13 2 PLY SBS ROOFING SYSTEM
- 7.14 CANT STRIP
- 7.24 ROOF DRAINAGE MAT
- 7.25 FORMED ALUMINUM WINDOW HEAD FLASHING
- 7.26 FORMED ALUMINUM SILL
- 7.36 MCM PANEL
- 7.39 TRANSITION MEMBRANE
- 7.40 FILTER FABRIC
- 7.45 CUBE TRAYS
- 7.55 ADJUSTABLE PEDESTALS
- 8.01 ALUM STOREFRONT, CURTAINWALL, OR WINDOW SYSTEM, SEE OPENING SCHEDULE
- 8.03 SPANDREL GLAZING
- 8.09 BACK PANEL
- 9.01 5/8" GYPSUM BOARD, SEE FINISH PLAN FOR FINISH MATERIAL
- 9.02 WALL BASE, SEE FINISH PLAN FOR FINISH MATERIAL
- 9.04 5/8" EXTERIOR SHEATHING
- 9.07 1/2" COVER BOARD